

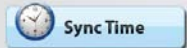
Getting Started With PhotoTrackr

Important: in order to geotag your pictures, you will need to synchronize your camera time first. See below for details.

1. Take PhotoTrackr out where it can see the sky and turn it on. It will usually takes up to 15 minutes to get an initial GPS fix.
2. When GPS signal is fixed, the LED will flash indicating it is recording.

Camera Time Synchronization

Important: in order to geotag your pictures, you will need to synchronize your camera time first.



| | | | |
|--|-------------|-----------|-------------|
| 3:22pm Tuesday (PDT) - Time in Brea, California | | | |
| Washington D.C. | 6:22pm EDT | Chicago | 5:22pm CDT |
| Denver | 4:22pm MDT | Phoenix | 3:22pm MST |
| Los Angeles | 3:22pm PDT | Anchorage | 2:22pm AKDT |
| Honolulu | 12:22pm HST | | |

You can synchronize your camera time in one of the following ways:

Sync with Web

1. Take your camera out and go to time setting screen.
2. Go to <http://www.gisteq.com/Mac> and click on "Sync Time"
3. On the next page, it will display the current time. Adjust your camera time to match the time displayed on the screen.

Sync with Computer

1. Take your camera out and go to time setting screen.
2. Click the time shown in the upper right hand corner and select "open Date & Time".
3. In the Date & Time window, make sure to the system time is synchronized to the time server by checking the box "Set date & time automatically".
4. Adjust your camera time to match the time displayed on the screen the best you can.

*Your camera is ready to use with PhotoTrackr. If you haven't recorded any trips yet, you might start to do so. If you have your trips and photos ready for download, please go to the next section.

Software Installation

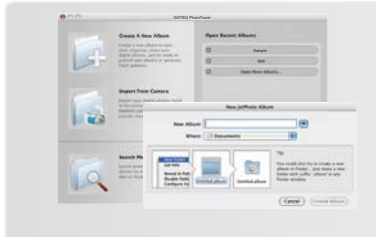


1. Go to <http://www.gisteq.com/Mac/>
2. Click "Download Now" to get the latest version online.



3. After the downloading the program, double click on the installation package to install the PhotoTrackr Mac software.

Create Photo Album

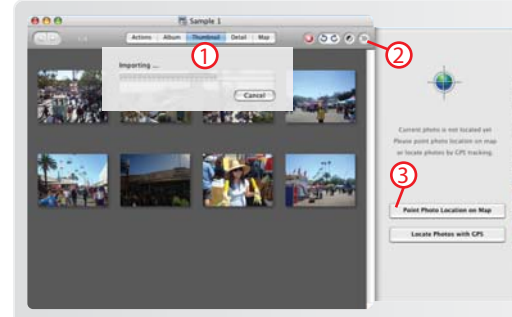


1. After the software installation is completed, you can launch the PhotoTrackr software. (It is installed under Application as default.)
2. In the main screen, Click "Create a New Album" and type in the name for your album.
3. Click "Create Album" to confirm.



Add Photos

Important: Please copy the photos to your local hard drive before importing.



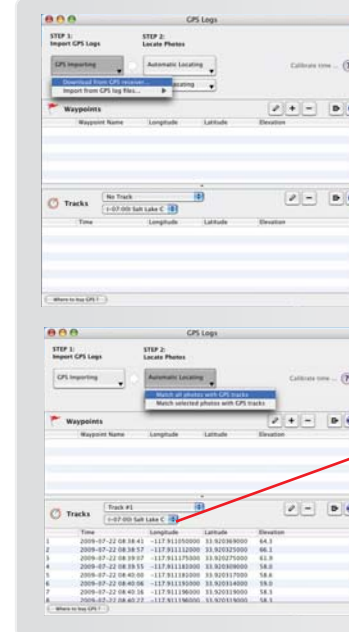
1. In the Thumbnail view, you can drag-and-drop the photos into the window.

Geotagging:

2. Extend the hidden panel and select the Geotag tab.
3. Click "Locate Photos with GPS"

Download Tracks

Important: Please turn on PhotoTrackr and plug it in before proceeding



Step 1 - Download Tracks

1. Click "GPS Import" and select "Download from GPS receiver"
2. In the new pop-up window, select "GiSTEQ USB Dongle" and "usbserial"

3. Select "Download Tracks" and click "Import"
- *Downloading should take a few minutes depends on the amount of data in the device. If the program is not responding, please unplug the device and plug it back in to reset it.

Important: before geotagging the photos, you will need to select the right time zone.

Step 2 - Locate Photos

4. Click "Automatic Locating" and select "Match all photos with GPS tracks"