



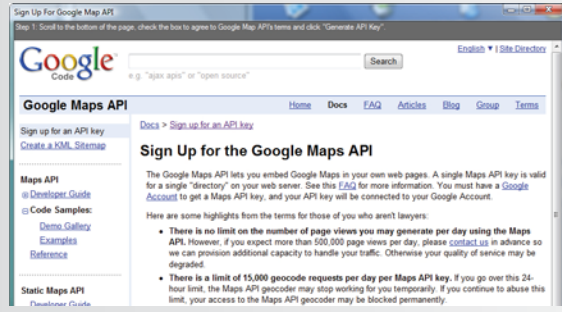
Getting Started With PhotoTrackr

Important: in order to geotag your pictures, you will need to synchronize your camera time first. See below for details.

1. Take PhotoTrackr out where it can see the sky and turn it on. It will usually takes up to 15 minutes to get an initial GPS fix.
2. When GPS signal is fixed, the LED will flash indicating it is recording.

Google API Key

If the software is launched for the first time, a Google Maps API key is needed.



1. When you see the Google Maps API page, scroll down to the bottom and check the box "I have read..." and make sure the URL is <http://maps.gisteq.com>.
2. Click "Generate API Key"
3. Sign in with your Google account in the next page

Camera Time Synchronization

Important: in order to geotag your pictures, you will need to synchronize your camera time first.



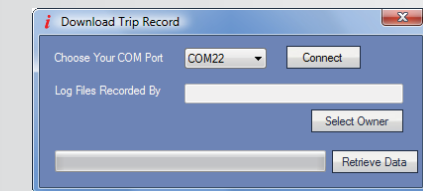
1. When you launch the program, you will see the geotag wizard which will guide you through the whole process.
2. Step 1: click "Sync Camera Time" to see the current GPS time. Adjust your camera time to match the GPS time the best you can.

*PhotoTrackr is ready to use with your camera. If you haven't recorded any trips yet, you might start to do so.

If you have your trips and photos ready for download, please go to the next section.

Download Trip Data and Photos

Important: before connecting PhotoTrackr to your computer, make sure the software is installed.



*After the software has been installed successfully, plug in PhotoTrackr and follow the Hardware Installation on the right to install the device driver.

Go back to the geotag wizard and proceed to Step 2:

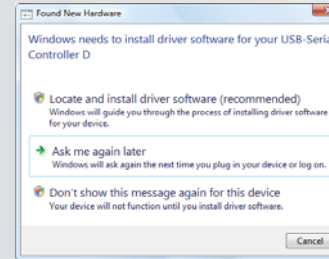
1. Step 2: click "Download".
2. Select the right COM port and then click "Connect".
3. Click "Select User" and select your account.
4. Click "Retrieve Data" to download the trip data.
5. go to Step 3 to add all your photos and click Next to continue.

Hardware Installation

Warning: Do not connect PhotoTrackr until the driver is installed.



1. Insert the software CD into your computer and the installation will start automatically.
2. Select "Install PhotoTrackr Driver" to start the driver installation.
3. Follow the on-screen instructions to continue with installation.



4. After the installation is completed, you can plug in the device.
5. When PhotoTrackr is plugged in, you will see a pop-up window as shown on the left. Select "Locate and install driver software (recommended)" and windows will start installing the driver. *It might take a few minutes for windows to search for the driver.



7. When the driver installation is completed, you will see a message saying "Prolific USB-to-Serial Com Port (COMxx) installed. *Please write down the COM port number. You will need this for later.



9. When driver installation is finished, you can go back to the CD Autorun Menu and select "install PhotoTrackr software" to continue PhotoTrackr software installation.